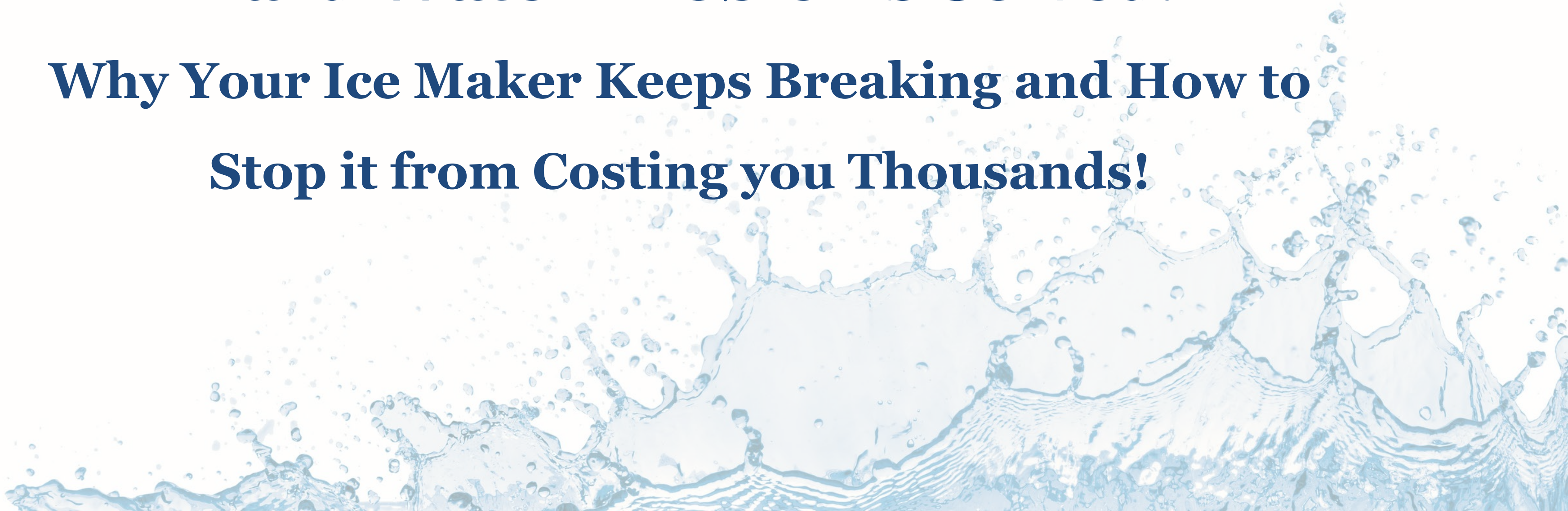


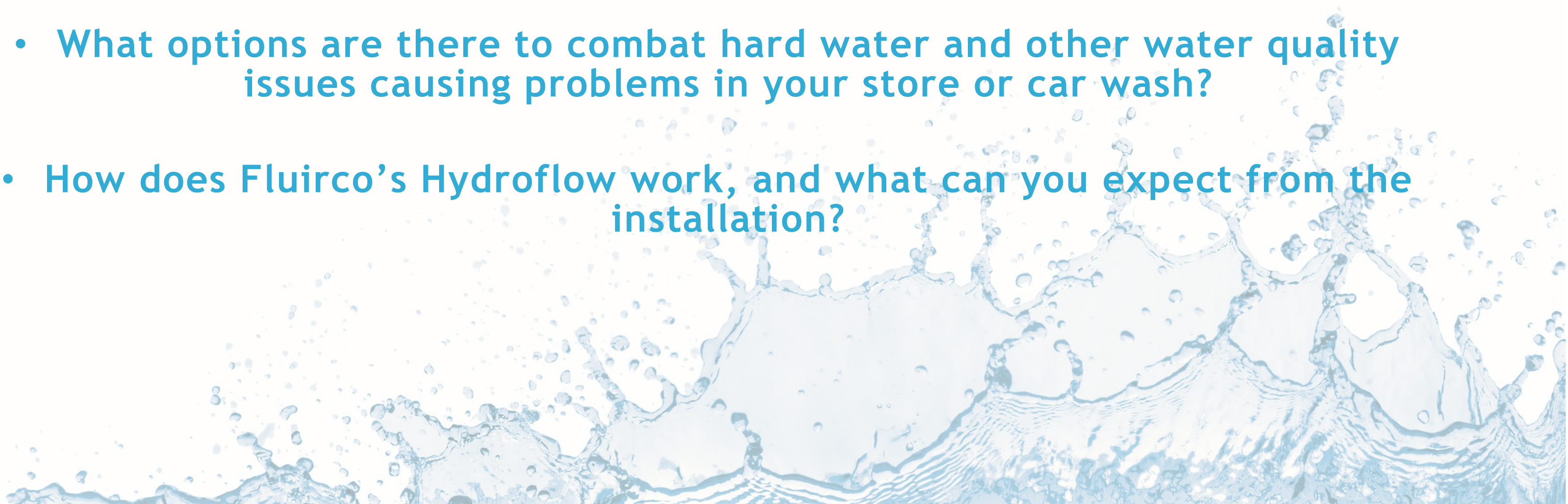
**Hard Water Problems Solved:
Why Your Ice Maker Keeps Breaking and How to
Stop it from Costing you Thousands!**





Hard Water Impact and Resolutions for Convenience Stores

- What effect does hard water have on your convenience store and how is it costing you money?
- What options are there to combat hard water and other water quality issues causing problems in your store or car wash?
- How does Fluirco's Hydroflow work, and what can you expect from the installation?



THE CHALLENGE:

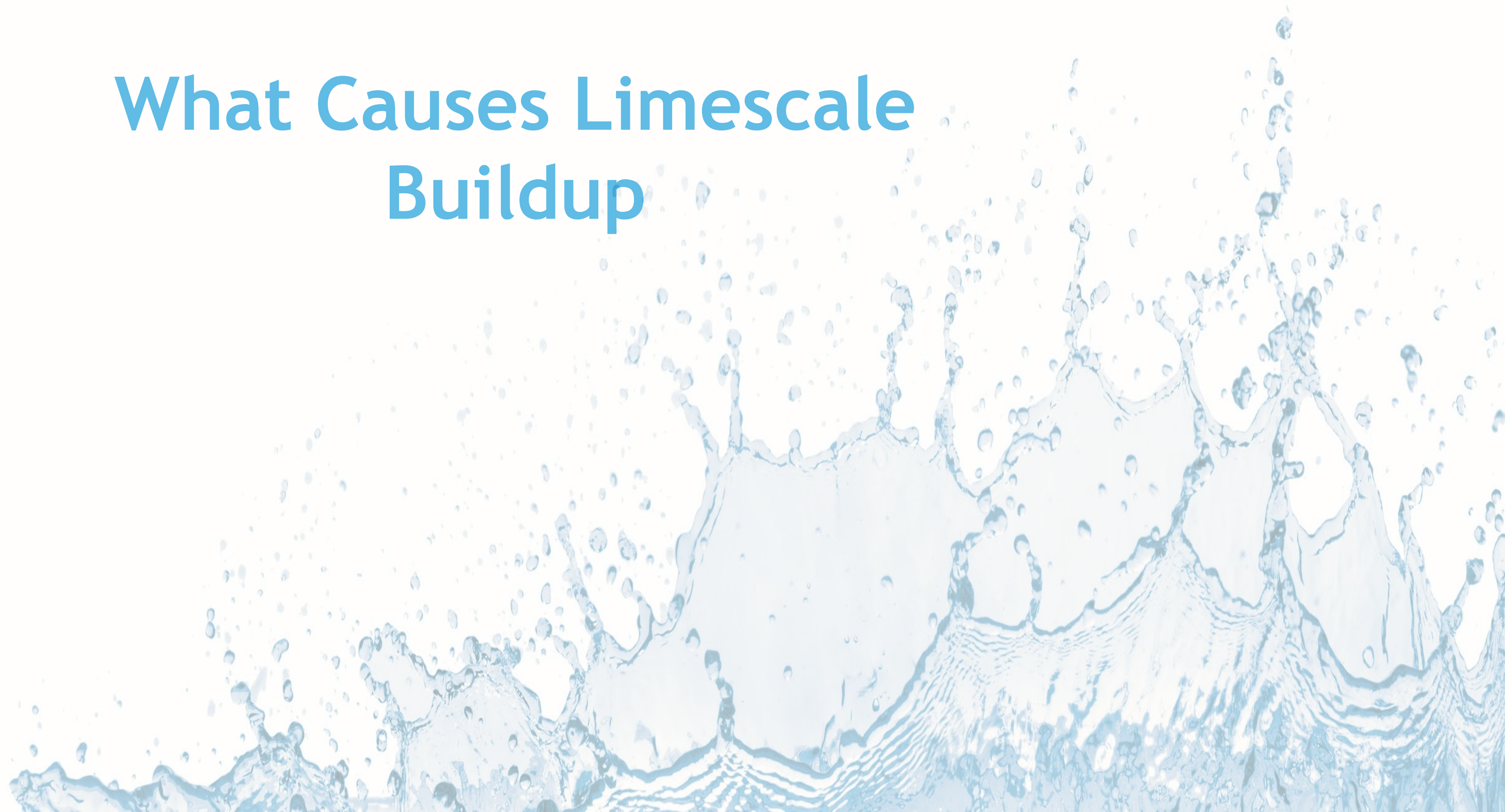
SCALE BUILUP & HIGH MAINTENANCE COSTS

- Constant scale buildup in water heaters, ice machines, food warmers, and coffee makers
- Decreased Equipment Lifespan and Increased maintenance time and costs due to hard water deposits
- Reduced efficiency and increased energy bills from insulated heating elements
- Increased labor costs from cleaning limescale with acids and chemicals.

Hardness Across the U.S.



What Causes Limescale Buildup



What Can Success Look like:

Case Study Results

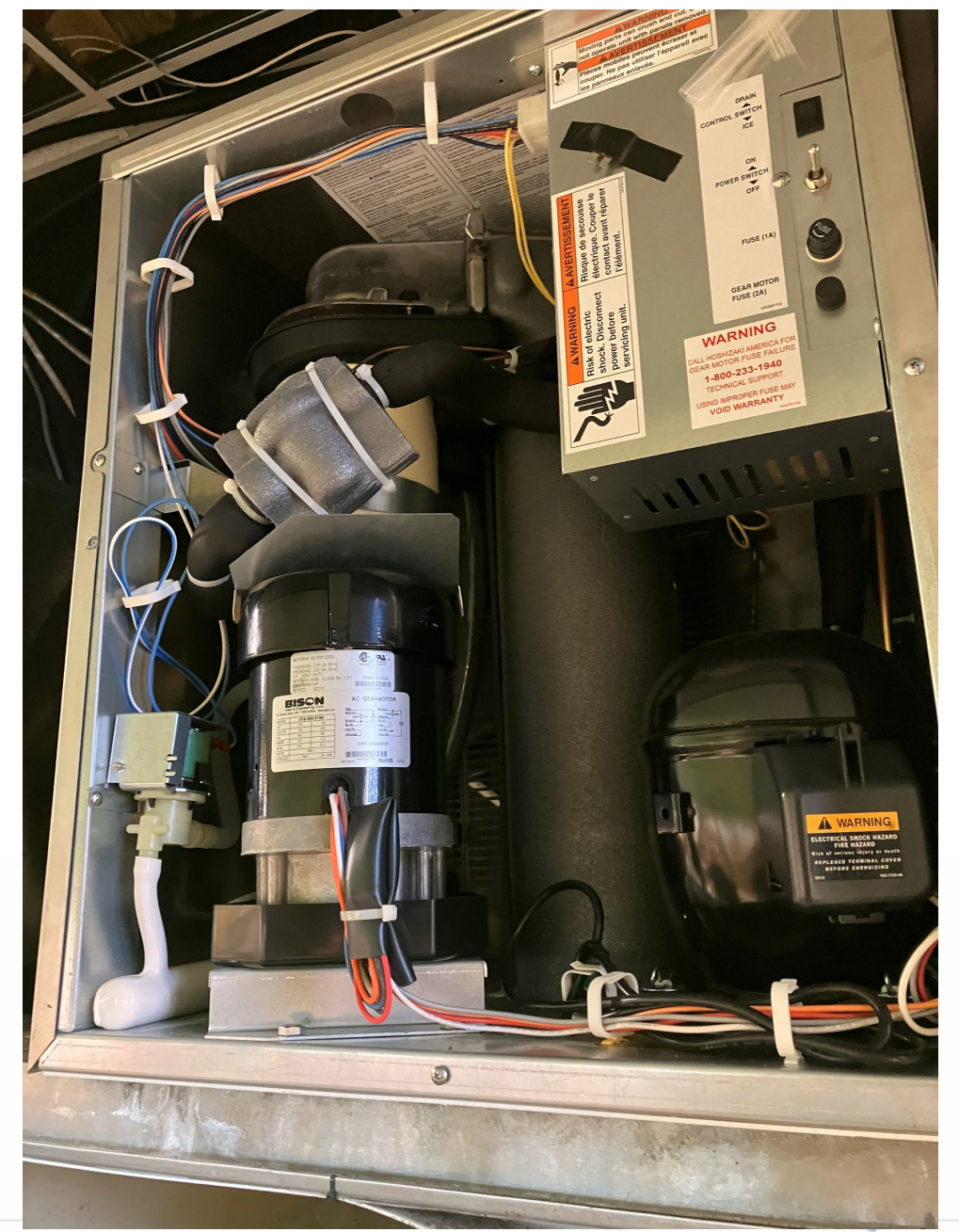


Estimated Cost Savings Based on Real Experience

Convenience store chain was replacing Hoshizaki Ice maker evaporator in their hard water stores between 2 and 4 times per year. Each replacement cost of between \$5,000 and \$7,000.

In one store, they replaced the ice maker just 2 weeks before we installed one Hydroflow HS40 and two Hydroflow Pearl Plus units, in August, 2023. And they have not had a maintenance call out on that ice maker since. Savings on that one ice machine over the last year and half is greater than \$20,000.





Ice Maker Evaporator

After nearly 18 months, no service or issues due to scale in the replaced Hoshizaki Ice Maker.

Results: Food Warmer

Store manager:

“After a few days of using HydroFLOW, we noticed hard scale is not sticking to the heating plate; the residue is powdery and easy to clean.”





Scale Removal

With Hydroflow, existing scale will begin to soften and remove itself

Water Filtration and Treatment Options:



Water Filtration Options

Sediment Filtration

- Removes visible particles, such as sand, silt, dirt, and rust, from water.
- Improve water clarity by trapping debris and suspended solids.



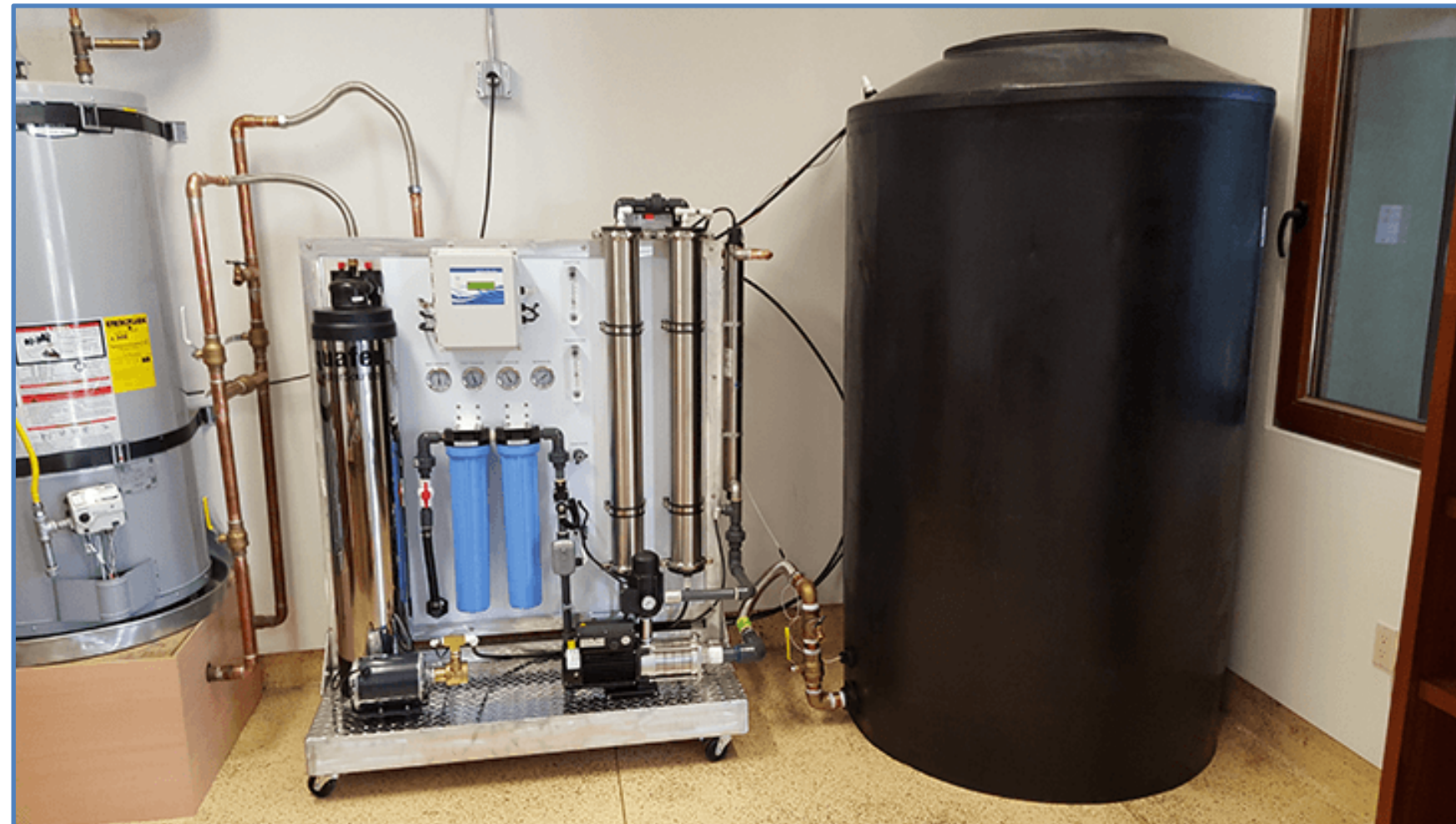
Activated Carbon Filtration

- Remove contaminants, including chemical contaminants, and impurities.
- Particularly effective at reducing chlorine and byproducts that affect water flavor.



Reverse Osmosis for Convenience Stores and Car Washes

- Utilizes a semi-permeable membrane to remove impurities from water by forcing it through the membrane under pressure.
- Purifies up to 99% of dissolved solids, heavy metals, and nitrates; ideal for poor water quality
- Utilize multi-stage filtration for high effectiveness, including sediment and activated carbon pre-filters.
- Drawbacks of RO Systems:
 - High Cost, expensive installation, high energy consumptions.
 - Large Footprint
 - Significant wastewater (About 4-5 gallons per gallon produced)
 - Maintenance and membrane replacements produce ongoing costs.



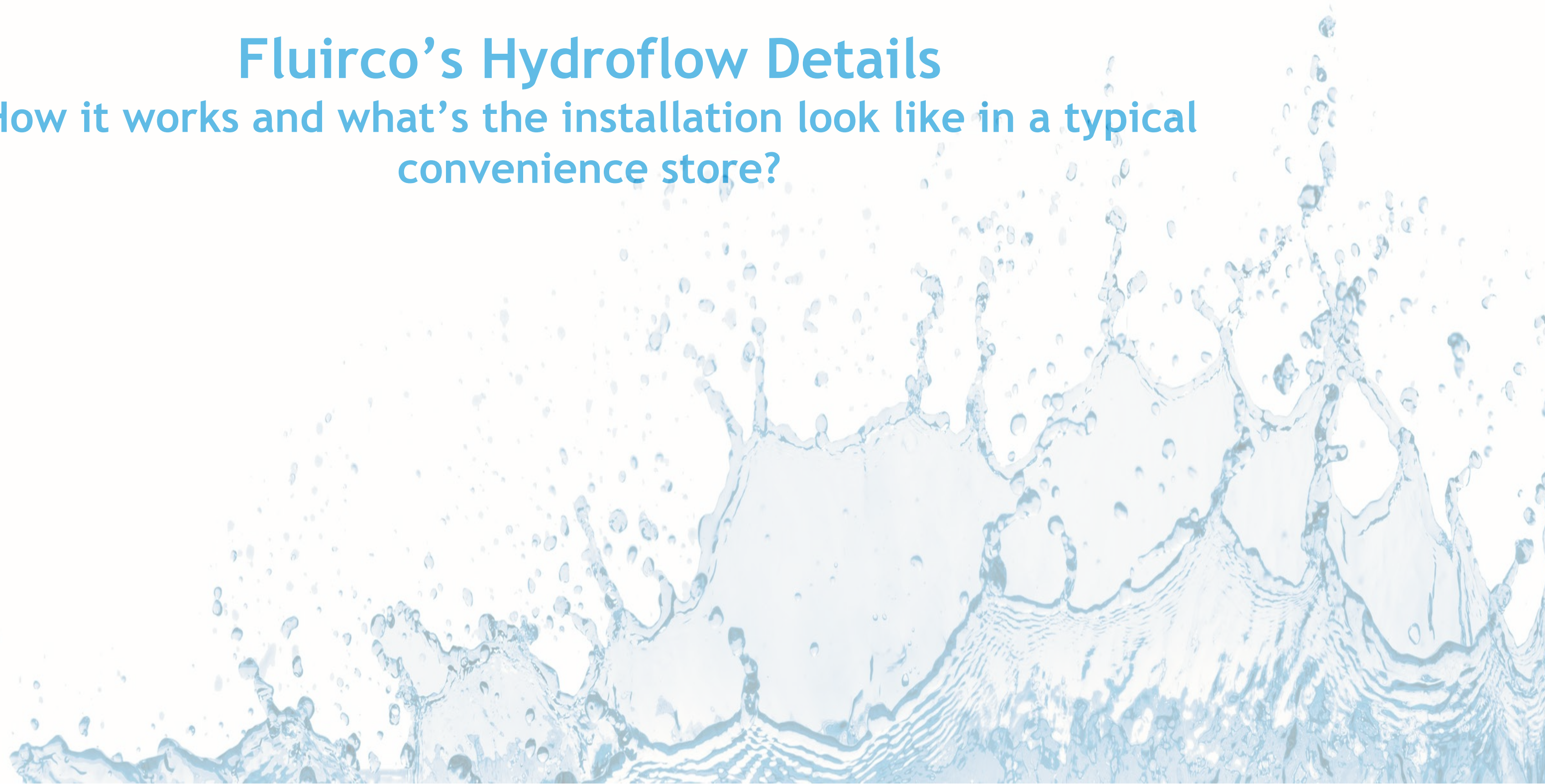
Traditional Water Softeners

- Salt-based water softeners work through ion exchange, replacing calcium and magnesium ions with sodium ions.
- Softened water effectively prevents scale buildup.
- Drawbacks of Water Softeners:
 - Expensive installation, large footprint, no microbial or bacteria mitigation.
 - Increases sodium levels, reduction in beneficial minerals.
 - Maintenance as well as salt and brine replenishment.
 - Corrosivity of softened water
 - Waste discharge effects on wastewater treatment plants

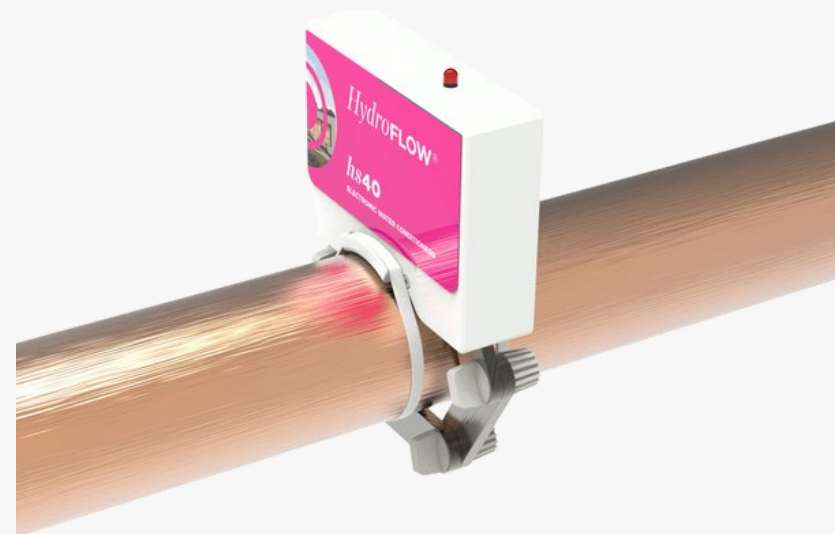


Fluirco's Hydroflow Details

How it works and what's the installation look like in a typical convenience store?



HYDROFLOW WATER CONDITIONERS



HYDROFLOW HS40

THE HS40 FITS PIPES UP TO 2.5" OUTER DIAMETER



HYDROFLOW PEARL Plus

THE S38 FITS PIPES UP TO 1.5" OUTER DIAMETER



HYDROFLOW PEARL

THE UNIT FITS COPPER/PVC/PEX PIPES UP TO 1" OUTER DIAMETER

HYDROFLOW INDUSTRIAL

THE UNIT IS FIT TO TREAT THE WATER IN YOUR CAR WASH TUNNELS AND SELF SERVE CAR WASHES FROM LIMESCALE AND BIOFOULING



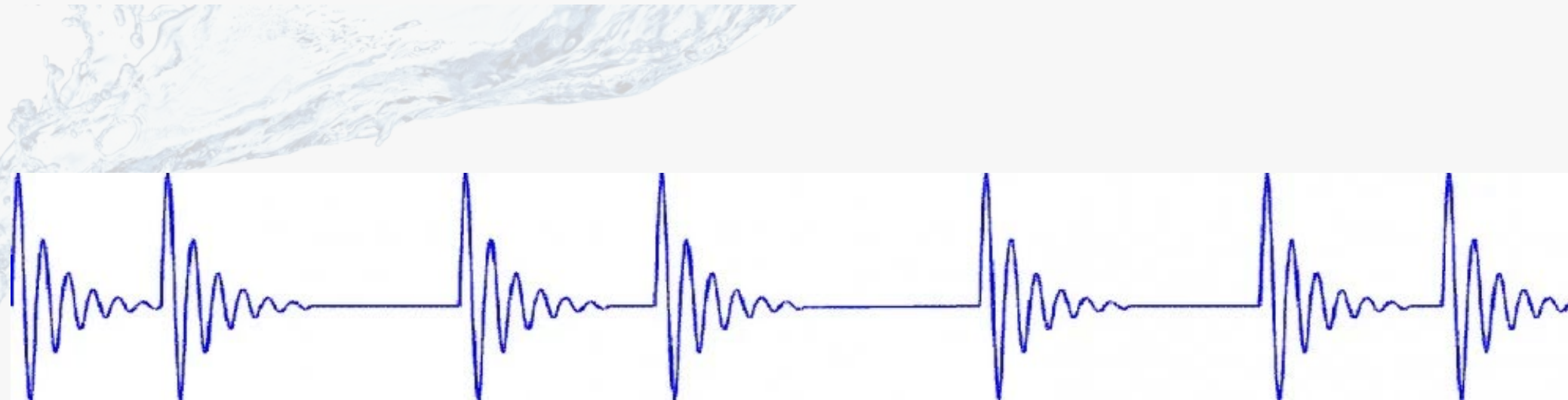


How it Works:



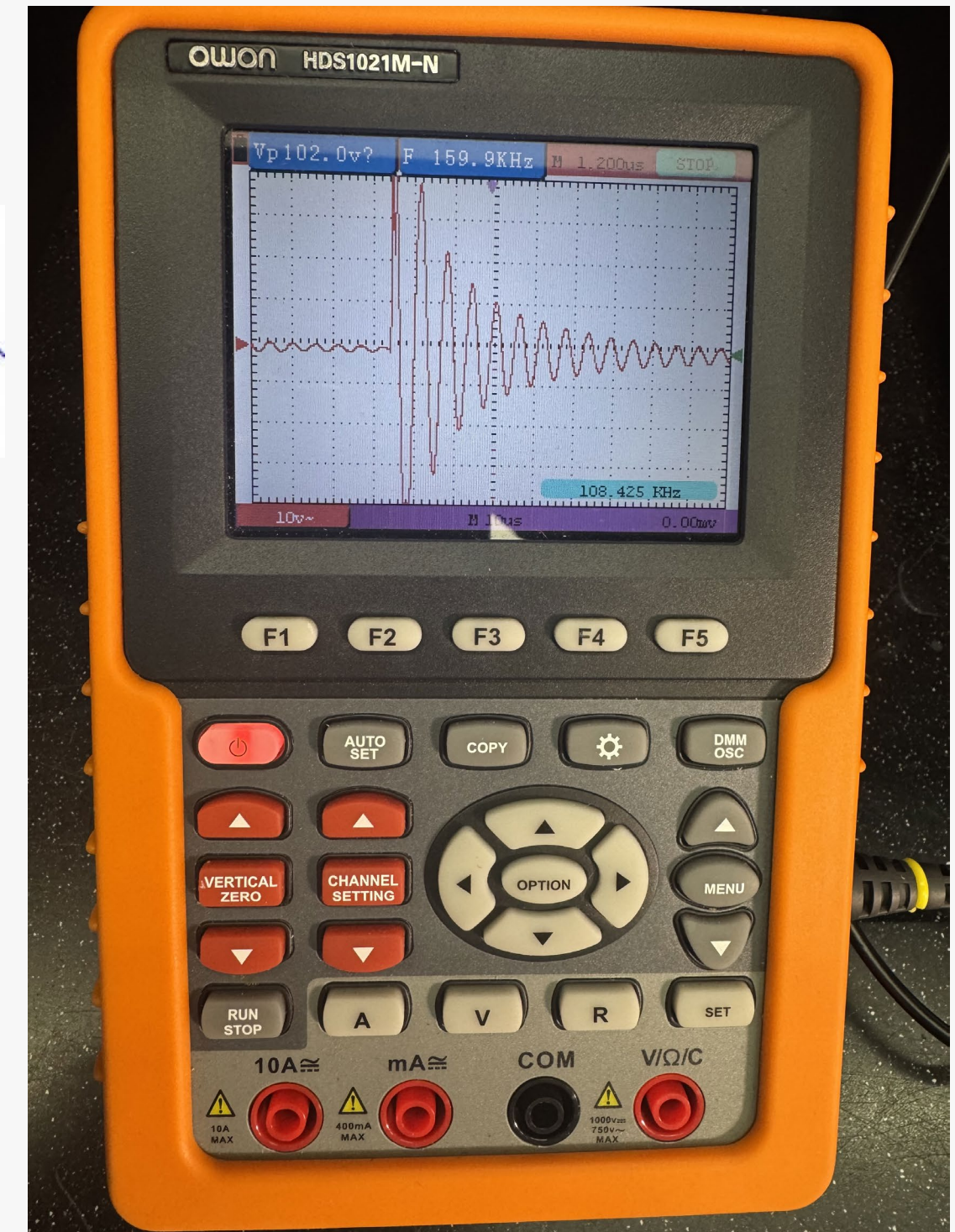
HYDROFLOW SIGNAL

150KHz throughout the entire plumbing system



These highly efficient, non-intrusive electronic descalers are installed directly on the water pipe seamlessly integrating into your existing plumbing system. HydroFlow works by emitting a robust yet harmless 150kHz signal throughout the system—whether it's copper, PEX, or PVC—triggering a natural process within the water.

This signal causes **mineral ions** to form **suspended clusters** that, when temperature or pressure changes occur, transform into stable crystals. These **crystals** actively **prevent scale buildup** on pipes and heating elements, improving **heat transfer efficiency**, reducing energy costs, and dramatically lowering maintenance requirements.





**STOP SCALE BUILDUP & REDUCE
MAINTENANCE COSTS TODAY**



Proven Solution for Gas Stations & Convenience Store Chains





Bacteria and Biofouling

Significant Bacteria CFU (colony forming units) reduction in all equipment protected with Hydroflow Equipment.

Hospital Bacteria Count Reduction

	Sink 1 Mixed	Sink 2 Hot	Sink 2 Cold	Cleaning Equipment Sink Hot	Cleaning Equipment Sink Cold	Equipment Sink 1 Cold	Equipment Sink 2 Cold	Hand wash Sink Cold	Hand wash Sink Hot
<i>Before HydroFLOW</i>	5,400 CFU/mL	3,000 CFU/mL	1,200 CFU/mL	300 CFU/mL	450 CFU/mL	100 CFU/mL	1,300 CFU/mL	290 CFU/mL	540 CFU/mL
<i>After HydroFLOW</i>	1 CFU/mL	1,160 CFU/mL	3 CFU/mL	2 CFU/mL	32 CFU/mL	6 CFU/mL	2 CFU/mL	32 CFU/mL	4 CFU/mL
% Reduction	99.98%	61.33%	99.75%	99.33%	92.89%	94.00%	99.85%	88.97%	99.26%



“Since Installing Hydroflow, we’ve seen a dramatic reduction in maintenance, and our equipment looks like new.

Starting with just 5 stations, we now have over 25 and plan to install more.

Fluirco’s low cost, zero-maintenance solution has delivered excellent results and reliable service.”

Enmarket-Maintenance and Project Manager





SEE RESULTS FOR YOURSELF: BOOK YOUR CONSULTATION TODAY

Don't wait for scale to cost you more in repairs, energy, and downtime. Schedule your free consultation today and discover how HydroFlow can work for you!

DEREK DESHAW

PRESIDENT

(619)708-4808

DEREK@FLUIRCO.COM

FLUIRCO.COM